

ENTrigue™ Biologics

The logical choice for tissue grafting.

Industry-leading Tutoplast® Processed Tissue, specific for ENT procedures.

Otolaryngologists now have an effective alternative for their soft tissue grafting needs. ENTrigue Surgical® has partnered with RTI Biologics, a global leader in soft tissue regenerative implants, to deliver an easy-to-use line of allograft solutions customized for ENT use. ENTrigue Biologics utilize the Tutoplast® Process, which is scientifically proven and clinically successful in over two million procedures.

The right tissue for your procedure:

- Five-year shelf life
- Terminally sterilized
- Room temperature storage
- Ready to use in 5 minutes
- Ideally sized for ENT applications



Ordering Options

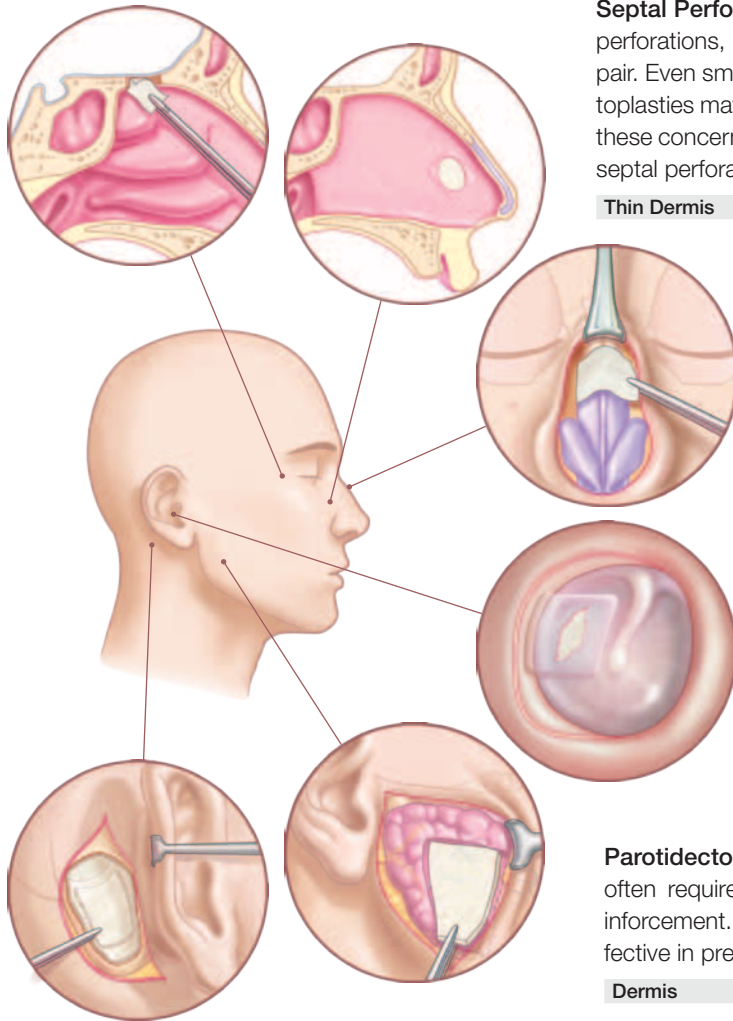
| Tissue | ESI Part Number | Dimensions (Dry) | Procedure |
|-------------|-----------------|--------------------|---------------------------------|
| Pericardium | 710 – 41025 | 1 x 2.5 cm (small) | Skull base/ Tympanoplasty |
| | 710 – 42030 | 2 x 3 cm (medium) | Skull base/ Tympanoplasty |
| | 710 – 44050 | 4 x 5 cm (large) | Skull base |
| Thin Dermis | 710 – 32030 | 2 x 3 cm | Septal Perforation |
| Dermis | 710 – 24050 | 4 x 5 cm | Mastoidectomy/ Parotidectomy |
| Fascia Lata | 710 – 13040 | 3 x 4 cm | Dorsal Augmentation |

Procedures

The following procedures are examples of soft tissue use in Otolaryngology:

Skull Base Defects – Transnasal skull base procedures often require grafting solutions to repair defects or fill voids. Allograft pericardium is an ideal graft material, because it can be incorporated into surrounding host dura and has excellent handling characteristics.¹

| Pericardium | 710 – 41025 | 1 x 2.5 cm | Small |
|-------------|-------------|------------|--------|
| | 710 – 42030 | 2 x 3 cm | Medium |
| | 710 – 44050 | 4 x 5 cm | Large |



Septal Perforation – Numerous factors can cause septal perforations, which are often formidable challenges to repair. Even small bilateral rents or tears created during septoplasties may lead to perforations. Thin dermis addresses these concerns and has been shown to successfully repair septal perforations.²

| Thin Dermis | 710 – 32030 | 2 x 3 cm |
|-------------|-------------|----------|
|-------------|-------------|----------|

Dorsal Augmentation – A protective tissue covering is often required in dorsal augmentation to refine rigid bone and cartilage. Fascia lata has been shown to successfully enable contouring of the dorsum and is particularly useful in procedures to correct dorsal irregularities.³

| Fascia Lata | 710-13040 | 3 x 4 cm |
|-------------|-----------|----------|
|-------------|-----------|----------|

Tympanoplasty – To simplify the tympanoplasty procedure, ENTrigue offers an off-the-shelf solution eliminating the need to harvest tissue from the patient. Our allograft pericardium graft offers similar thickness and handling characteristics to that of native temporis fascia and has been shown to have excellent anatomical and audiological results postoperatively.⁴

| Pericardium | 710 – 41025 | 1 x 2.5 cm | Small |
|-------------|-------------|------------|--------|
| | 710 – 42030 | 2 x 3 cm | Medium |

Parotidectomy – To prevent Frey's Syndrome, surgeons often require a thick tissue graft for protection and reinforcement. Dermal allografts have been shown to be effective in prevention of Frey's Syndrome.⁵

| Dermis | 710 – 24050 | 4 x 5 cm |
|--------|-------------|----------|
|--------|-------------|----------|

Mastoidectomy – A mastoidectomy often leaves a void or unoccupied space behind the ear that requires reinforcement or filling for ideal results. Dermal allografts have been shown to work well creating a dry, re-epithelialized mastoid bowl.⁶

| Dermis | 710 – 24050 | 4 x 5 cm |
|--------|-------------|----------|
|--------|-------------|----------|

At ENTrigue Surgical, we're rethinking established surgical techniques to develop innovative solutions that make ENT surgery more efficient, effective, and comfortable for patients. To learn more about our entire portfolio of surgical solutions, contact your local distributor or visit us online at: entriguesurgical.com

Distributed by:

ENTRIGUE SURGICAL

12672 Silicon Drive, Suite 150
San Antonio, Texas 78249

Customer Service: 877.300.5010 | Fax: 210.298.6399

1. Caroli E, Rocchi G, Salvati M and Delfini R. Duraplasty: Our current experience. *Surg Neurol*, 2004; 61(1): 55–59.
2. Kridel RWH, Foda H and Lunde KC. Septal perforation repair with acellular human dermal allograft. *Arch Otolaryngol Head Neck Surg*, 1998; 124(1): 73–78.
3. Jang YJ, Wang JH, Dinha V, Song HM and Lee BJ. Tutoplast-processed fascia lata for dorsal augmentation in rhinoplasty. *Otolaryngol Head Neck Surg*, 2007; 137(1): 88–92.
4. Gerard JM and Gersdorff M. The Tutopatch® graft for transcanal myringoplasty. *B-ENT*, 2006; 2(4) 177–179.
5. Govindaraj S, Cohen M, Genden EM, Costantino PD and Urken ML. The use of acellular dermis in the prevention of Frey's Syndrome. *Laryngoscope*, 2001; 111(11 Pt 1): 1993–1998.
6. Weber PC, Lambert PR, Cunningham CD 3rd, Richardson MS and Genao RB. Use of AlloDerm in the neurotologic setting. *Am J Otolaryngol*, 2002; 23(3): 148–152.